

CS8120 Technical Manual

- 1) Remove the rubber pad and unscrew it. Ref : Fig 01
- 2) Unplug the Flexi cable. Ref : Fig 02
- 3) Open the bottom cover and unscrew two screw. Ref : Fig 03
- 4) Take out the interface board. Ref : Fig 04
- 5) For remove the stand unscrew two screw and remove the plastic cover. Ref : Fig 05
- 6) On scanner back cover have two screw, unscrew it. Ref : Fig 06
- 7) Push the scanner top cover. Ref : Fig 07
- 8) Open the top cover. Ref : Fig 08



Fig 01

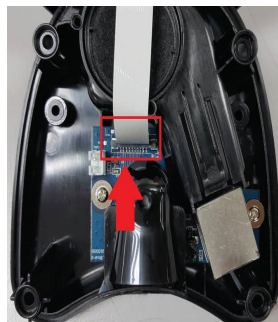


Fig 02



Fig 03



Fig 04

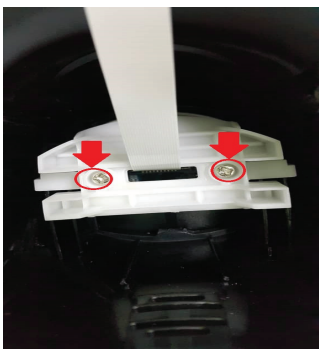


Fig 05

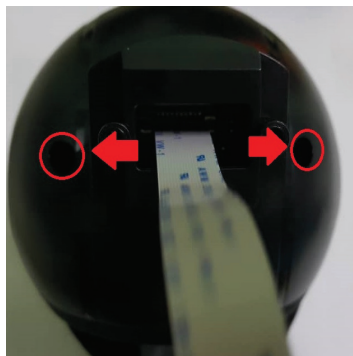


Fig 06

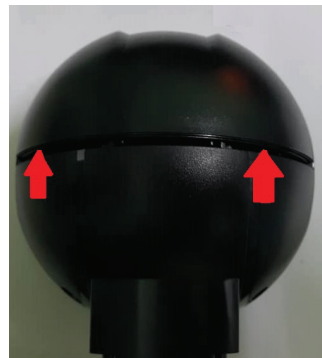


Fig 07

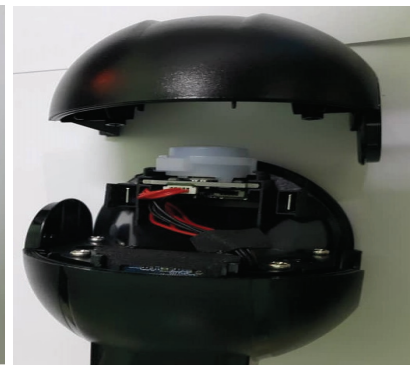


Fig 08

- 9) On to scanner have one button cover, move it out. Ref : Fig 09
- 10) Move out the button board. Ref : Fig 10
- 11) Button board. Ref : Fig 11
- 12) For Remove the scanner windows glass, need to unscrew four screw. Ref : Fig 12
- 13) Remove the bottom cover and open the rubber clip. Ref : Fig 12
- 14) Remove the windows rubber holder and glass. Ref : Fig 13
- 15) For Remove LED light, unplug the cable and open the clip. Ref : Fig 14
- 16) Move out the LED light with bracket. Ref : Fig 15
- 17) For remove the scan engine, unscrew two screw and remove the cellulose tape. Ref : Fig 16
- 18) Scan engine. Ref : Fig 17
- 19) For remove the Decode Board, Unplug all the cable and remove two screw. Ref : Fig 18
- 20) Decode board. Ref : Fig 19



Fig 09

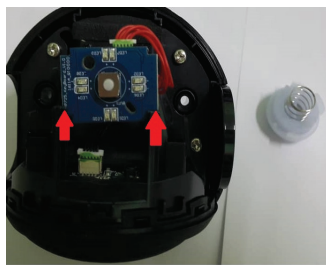


Fig 10

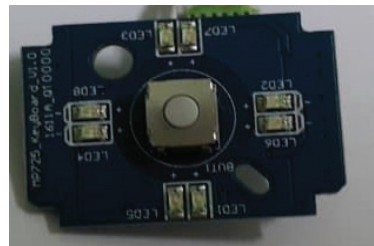


Fig 11

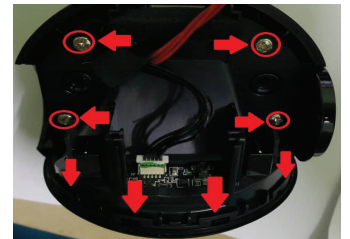


Fig 12

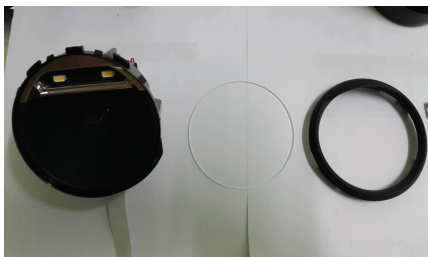


Fig 13

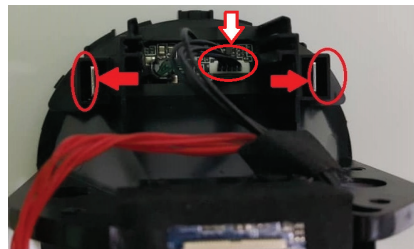


Fig 14



Fig 15

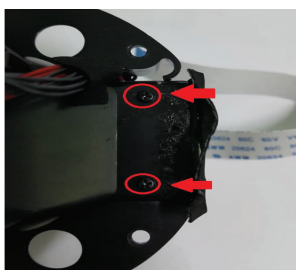


Fig 16



Fig 17

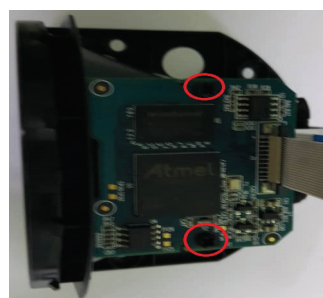


Fig 18

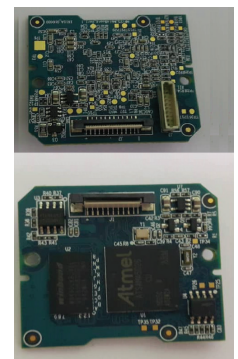


Fig 19